

Community of Three Rivers

Schedule "A"

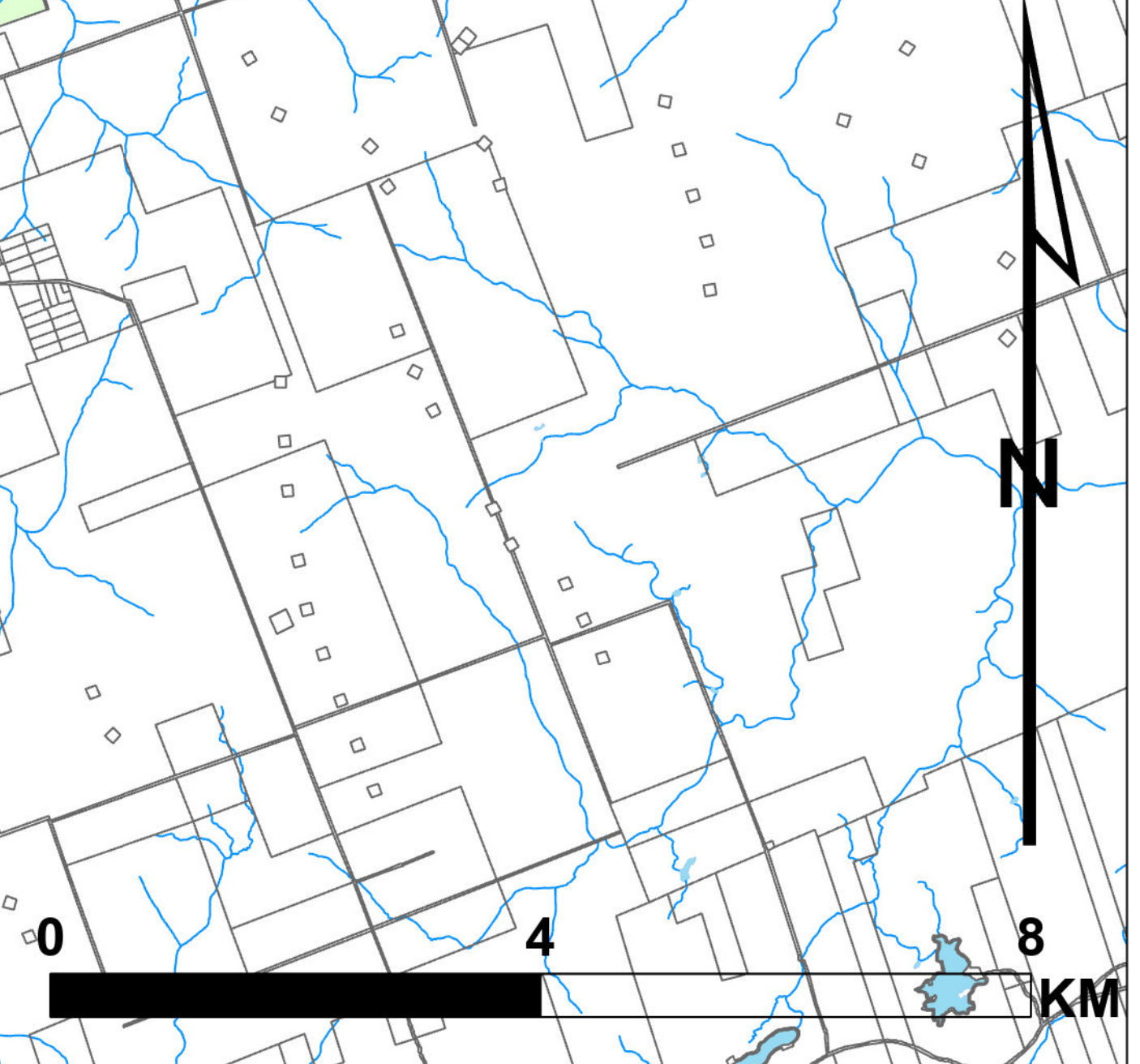
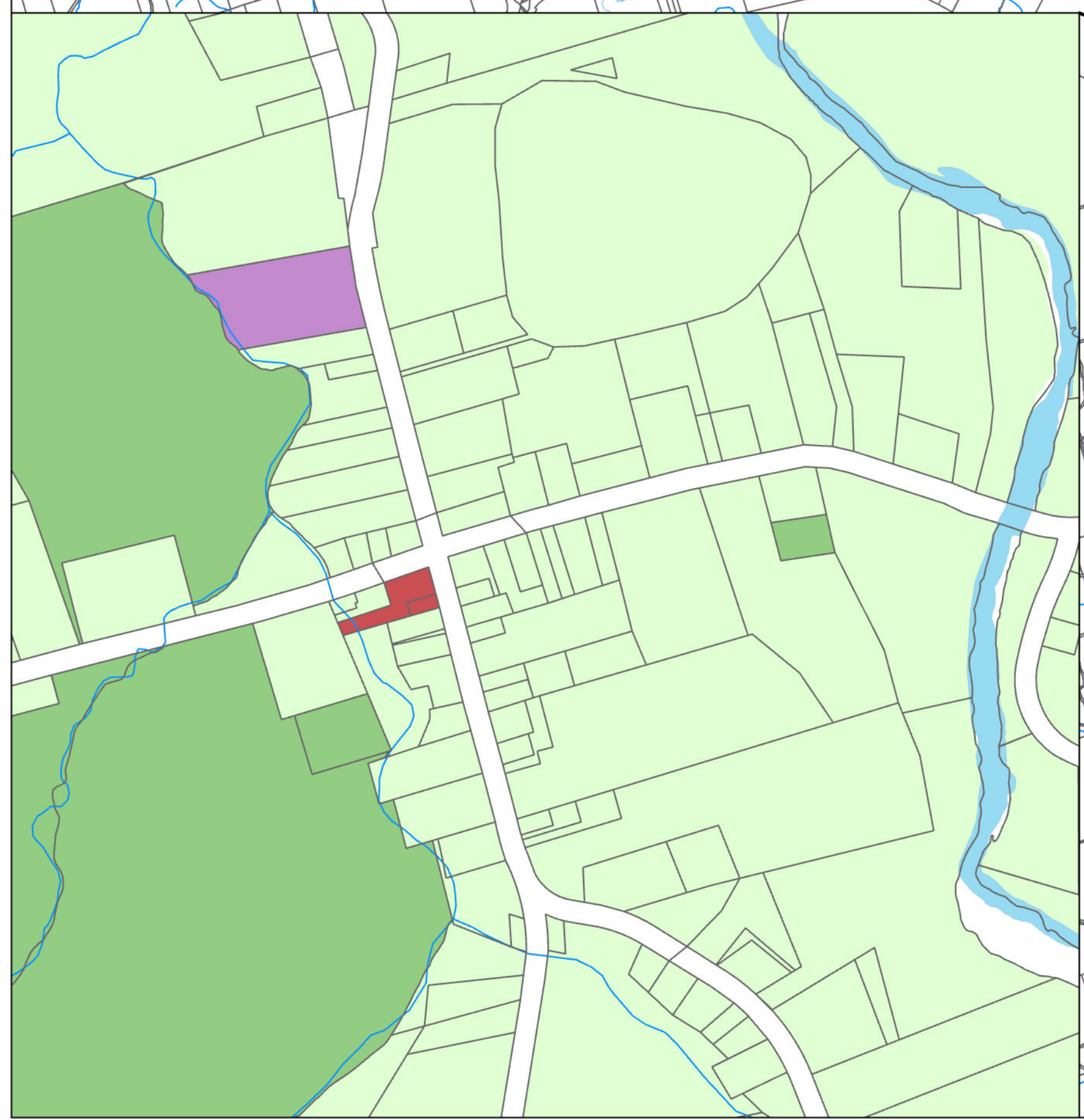
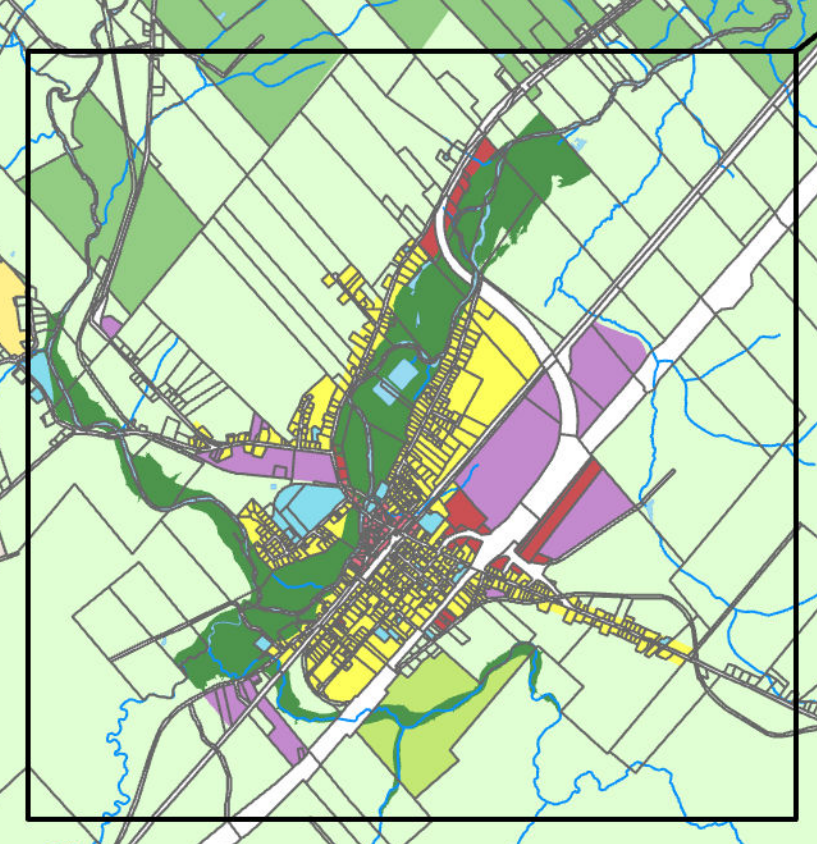
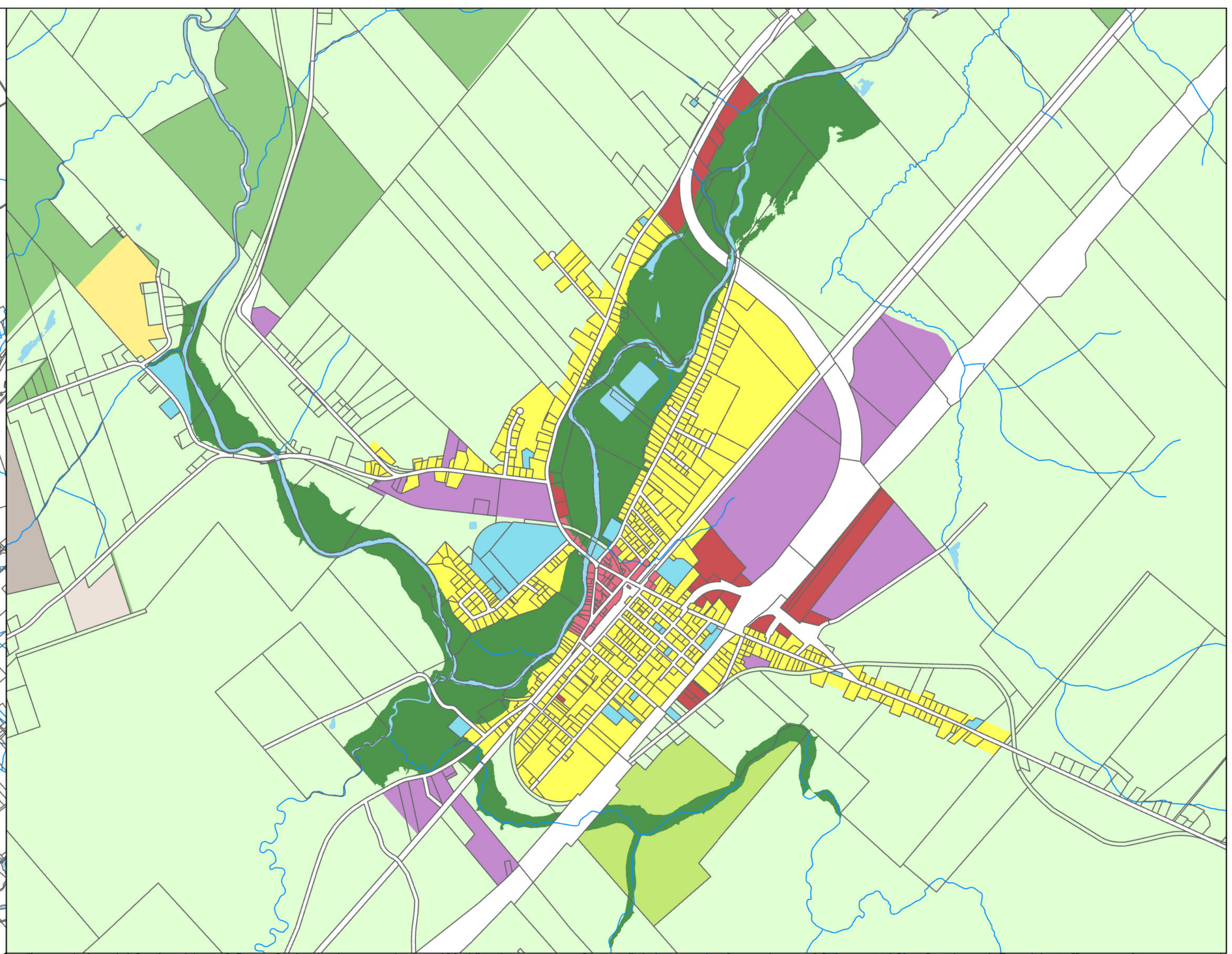
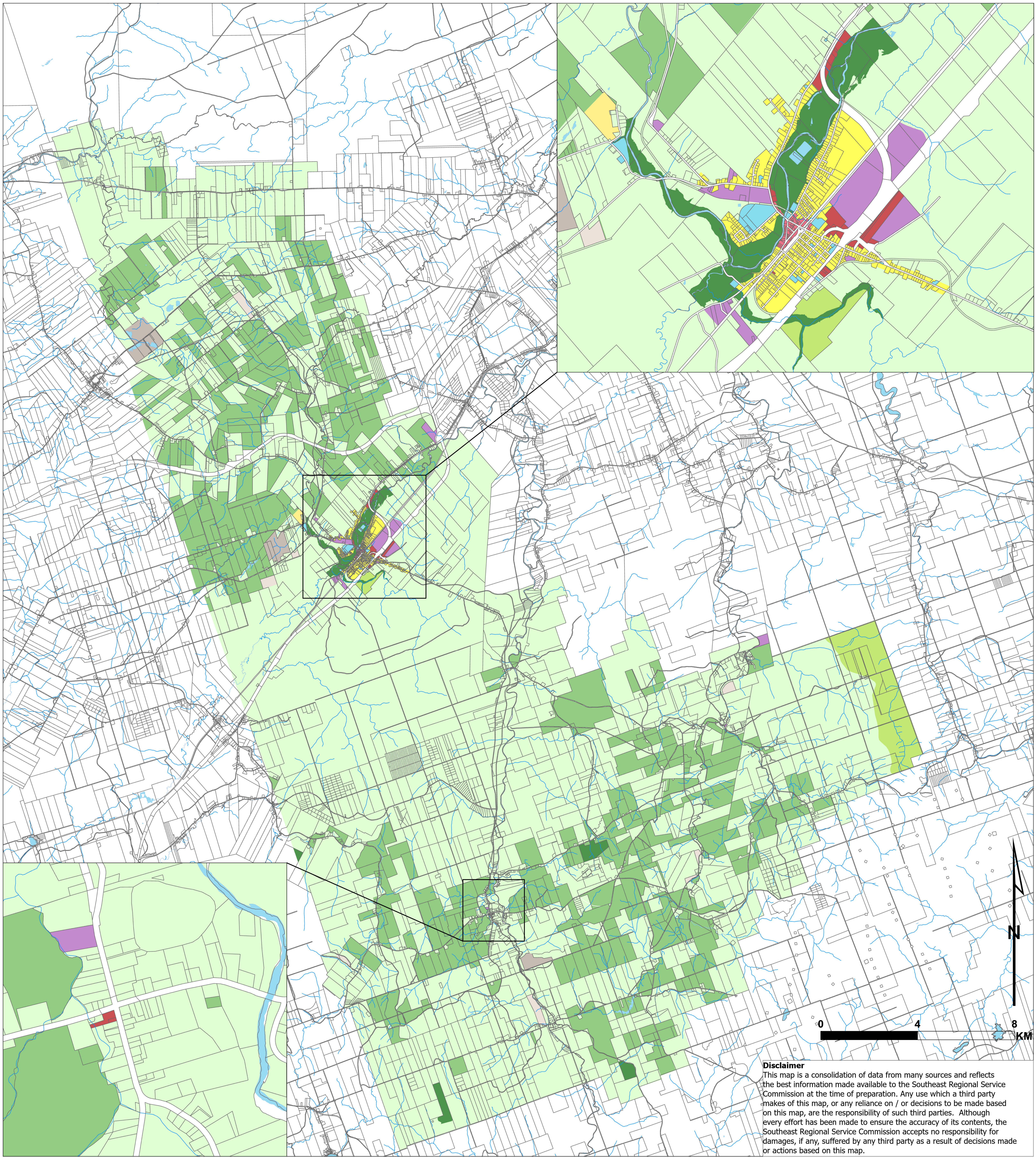
Zoning Map

Dated January 2026

- Residential Serviced
- Residential Rural
- Central Commercial
- General Commercial
- Industrial

- Rural Area
- Agriculture
- Resource Development
- Intensive Resource Development
- Community Use

- Open Space Conservation
- Water Protection
- Infill Overlay
- Entity Boundary
- Parcels
- Water Bodies



Disclaimer
This map is a consolidation of data from many sources and reflects the best information made available to the Southeast Regional Service Commission at the time of preparation. Any use which a third party makes of this map, or any reliance on / or decisions to be made based on this map, are the responsibility of such third parties. Although every effort has been made to ensure the accuracy of its contents, the Southeast Regional Service Commission accepts no responsibility for damages, if any, suffered by any third party as a result of decisions made or actions based on this map.